

Doppstadt

MIXER DM 215 E

MIXER LINE



Best Solution. Smart Recycling.

doppstadt.com





DRIVE

The machine is driven by a 160kW electric motor. The connection between the motor and the planetary gear unit is automatically disconnected in the event of an excessive load via a turbo coupling with renewable fuses.

MIXER DM 215 E



MAINTENANCE DOORS

The hopper walls of the 15m³ mixing room are designed as hinged doors and thus allow easy cleaning and replacement of the wearing parts.



MIXING SHAFTS

Three horizontal screws accomplish the mixing work. The segments made of wear-resistant materials are positioned at different pitch angles and are easily replaceable.



WEIGHING CELLS

With the help of an optional set of weighing cells exact mixtures can be produced and additives such as lime can be applied.

Advantages at a glance

With its three robust mixing screws and a capacity of 15m³ the Doppstadt Mixer masters the most demanding applications and provides a constant volume flow for subsequent process steps.

- Variable mixing behaviour due to interchangeable shovel plates on the screw flight (smooth or toothed)
- Robust, non-sensitive process for heavy mixing tasks
- Good accessibility of tools and process chamber via large maintenance doors
- Continuous or batch operation possible
- Exact setting of operating parameters via programmable logic controller





Doppstadt Mixer DM 215 E

Three-shaft horizontal mixer for intensive kneading and mixing

The DM 215 E has three mixing screws within a 15m³ mixing chamber. The upper two screws convey the feed material into the opposite direction of the lower mixing screw. In consequence the feed material follows a circulating motion, gets homogenized and mixed. The continuously variable dosing gate ensures the controlled and constant discharge of the mixed product. In case of batchwise operation the gate

can be set to open and close in certain intervals.

The Doppstadt Mixer is applied to homogenize organic or mixed waste, soil, and sludge. Large, smoothly operable service doors are installed in order to ensure save maintenance of the machine.

Exact mixtures can be prepared and additives such as lime can be applied using an optional set of weighing cells.

Other optional pieces of equipment are a cover lid for the mixing chamber to avoid dust emissions and a conveyor belt for the discharged product.

The most important machine functions can be operated via optional remote control from out of a wheel loader, thus enable one-man operation of the DM 215 E.

THIS IS DOPPSTADT

Headquartered in Velbert, Germany, the Doppstadt family firm was founded in 1965. While the company has its origins in developing agricultural machinery, Doppstadt today is a leading, globally active solutions and services provider in all areas of recycling/environmental technology and recyclables extraction.

"Best Solution. Smart Recycling." – With this as our guiding principle, we combine proven processes to create customised end-to-end solutions characterised by innovative processes, optimum efficiency, and maximum cost-effectiveness. Particularly in the areas of water-based separation systems and wet recycling, we impress

our customers by providing flexible systems to tackle every challenge. With locations in Velbert, Wülfrath, Calbe, and Wilsdruff, Germany, we serve customers in more than 40 countries through our own dealer network and offer comprehensive services for every product in Doppstadt's unique portfolio.



The process result

The application of the Doppstadt Mixer is the homogenization of organic waste or, materials such as:

- Green waste and tree clippings
- Biowaste
- Contaminated soil
- Sludge
- Compost
- Certain additives (e.g. lime or bark mulch)

The Doppstadt Mixer introduces high kneading energy into the material to disintegrate agglomerates by shear stress.

The throughput in continuous operation is around 100m³/h depending on the material.

In case of batch operation depending on the mixing time and loading speed, throughput is accordingly less.

The process goal may be:

- Immobilizing moisture
- Adding structure for better aeration
- Neutralize or adjustment of pH using additives
- Setting the desired nutrient balance
- Homogeneous inoculation for biological treatment or soil remediation

OPTIONS

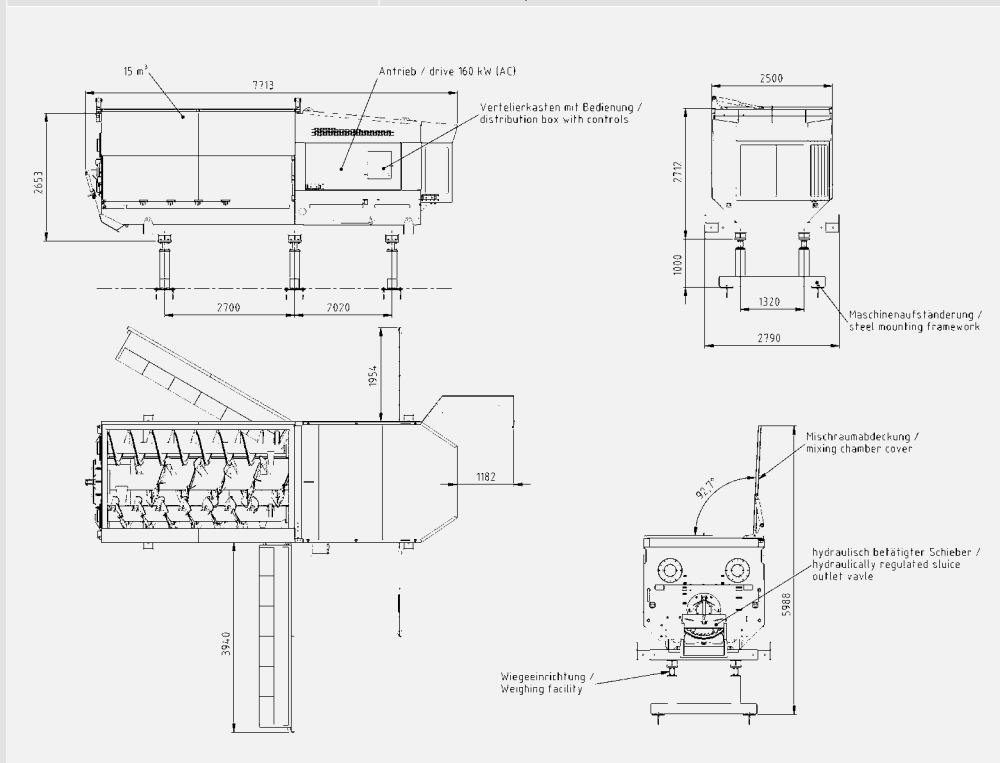
The material follows a circular motion within the mixing chamber due to the counter-conveying mixing screws. In the case of loading via wheel loader, an optional hopper enlargement can be installed to prevent material from spilling down the sides of the machine.

A hydraulically operated cover, controlled by remote can be opened for loading and closed to reduce emissions of dust and steam from the mixing chamber. Further options are water application system, weighing system and Profibus integration.



TECHNICAL DATA

DM 215 E	
Total weight	17,500kg
Chassis	stationary
Drive	electrical
Power	160kW / 218hp
Motor startup	star delta (soft starter optional)
Length	7,720mm
Width	2,500mm
Height	3,766mm
Mixing chamber volume	15m ³
Number of screw shafts	3
Screw diameter	top screw 700mm bottom screw 1,100mm
Loading height	3,766mm
Loading width	3,775mm
Filling depth	2,050mm
Throughput	up to 100m ³ /h
Power hydraulic unit	3kW
Diameter of mixing screws	top screw 830mm bottom screw 1,080mm
Speed of mixing screws	top screw 19rpm bottom screw 13rpm



As of March 2020 – subject to technical alterations. All dimensions are in mm (ft./in). The specifications are approximate. Illustrations and descriptions may include options that are not part of the standard equipment.



Doppstadt Umwelttechnik GmbH
Steinbrink 13, D-42555 Velbert
Germany

+49 2052 889-0
info@doppstadt.de

doppstadt.com